

## HANGING AND SUSPENDING ARTWORK GUIDE

Please note that any and all installations within the school grounds may not endanger your fellow students, must be up to health, safety and fire codes, as well as OSHA standards. As such, Exhibition and Studio Services staff reserves the right to move or remove any artwork that is unsafe or unauthorized, as outlined in the Student Handbook. Please consult Exhibition and Studio Services before hanging any work from the ceiling, via email or in person at Office 133.

### PROHIBITED HANGING INSTALLATION METHODS:

- **DO NOT** drill into the ceiling in any location at MCAD.
- **DO NOT** hang or attach anything to pipes as it poses an immediate safety concern.
- **DO NOT** Hang anything from the track lighting without a hook. Electric current runs through the track and any material besides a hook can result in injury or damage to the track.

### APPROVED HANGING INSTALLATION METHODS:

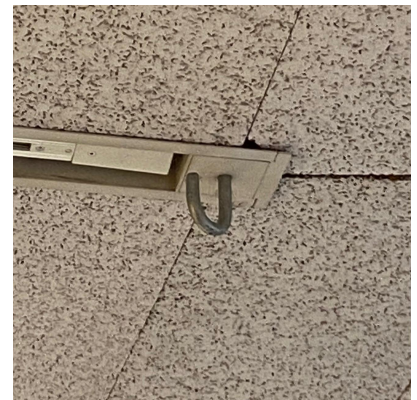
#### UTILITY HOOKS IN LIGHTING TRACKS

- Can hold up to 25 lb.
- Stop by the ESS Office to grab one, or use one already installed in the lighting track
- Only usable in lighting tracks (which are often in the center of hallways)



#### EXISTING CEILING HOOKS

- Can hold up to 40 lb.
- Only in certain locations on campus: near the ends of some of the lighting tracks
- Great for hanging heavier artworks



#### CEILING TILE HOOKS

- Can hold up to 15 lb.
- Can be installed anywhere with tiled ceiling
- Kept outside ESS office in supply locker, feel free to take



## HANGING AND SUSPENDING ARTWORK GUIDE

### UNISTRUT BEAMS

- Different beams can hold different amounts, all can safely hold up to 30 lb. Check with ESS about heavier loads.
- Only in certain locations on campus:
  - Ex. 4th floor ES Gallery, 3rd floor alcoves, outside of fitness center, outside of painting classroom



### WALL MOUNTED L- BRACKETS

- Can hold up to 50 lb when properly installed.
- Can be mounted/installed anywhere you can drill
- Great for suspending art away from wall
- Step by ESS Office to borrow one



### WALL MOUNTED PICTURE RAIL

- Can hold up to 25 lb.
- Hang with S hooks and cable
- ESS can provide cabling equipment and assistance
- Only in certain locations on campus



### L HOOKS

- Can hold up to 5 lb. each
- Can be mounted/installed anywhere you can drill
- Two L Hooks work great for holding dowels
- Step by ESS Office to grab one

